

## Remote Exhaust Measurement System (REMS)

# fact sheet

### *Essential Component in Remote Monitoring and Diagnostics Services*

### Enhanced Tuning Speed and Accuracy

GE Energy's REMS dramatically enhances the tuning process for F-class gas turbines with existing remote DLN tuning systems. The REMS provides NO<sub>x</sub>, CO and O<sub>2</sub> measurement directly from the gas turbine exhaust duct and transmits the data to the GE remote DLN tuning team in Atlanta.

Unlike a conventional CEMS, the REMS samples flue gas prior to any flue gas conditioning—removing the risk of measurement interference from SCR equipment or duct burners. Optimum placement of the probe within the exhaust duct (based on GE testing) ensures the best representative sample of bulk average emissions.

### DLN Integration

A direct electronic link allows GE's tuning operator to access exhaust gas measurements—eliminating the time and expense of hiring a stack tester for turbines with air permits that require an SCR to operate while the turbine is running.

Integration of the REMS with the remote DLN tuning system provides the GE tuning operator with a complete view of turbine operations, settings, and emissions. This allows the operator to tune for emissions with little impact on the system.

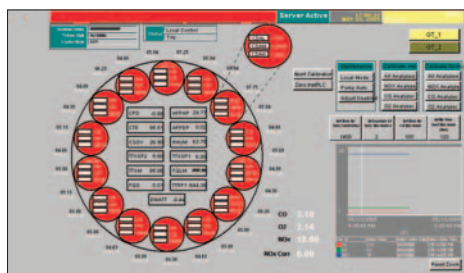
GE's industry-proven REMS technology seamlessly meshes with the DLN system to ensure a high level of accuracy and minimize the need for additional spare parts.

### Easy Installation and Maintenance

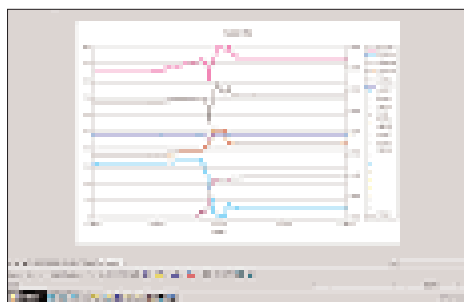
The REMS offering can be installed as a supplement to GE Energy's Remote DLN Tuning Services for F-class turbines equipped with DLN 2.6 and DLN 2.0 combustion systems. It can be installed at the time of Remote DLN Tuning installation or anytime afterwards.

The modular system allows simple installation and convenient access for maintenance and troubleshooting—with extraction probes that only require exhaust duct penetration and analyzers that can be accessed during operation.

Customer Display Screen



Remote Data Trending



## Typical Benefits

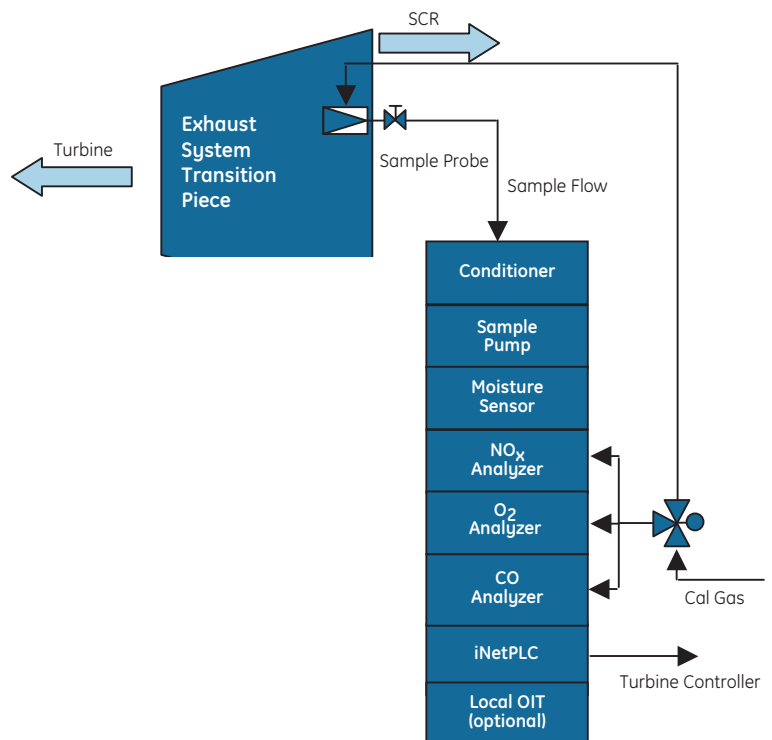
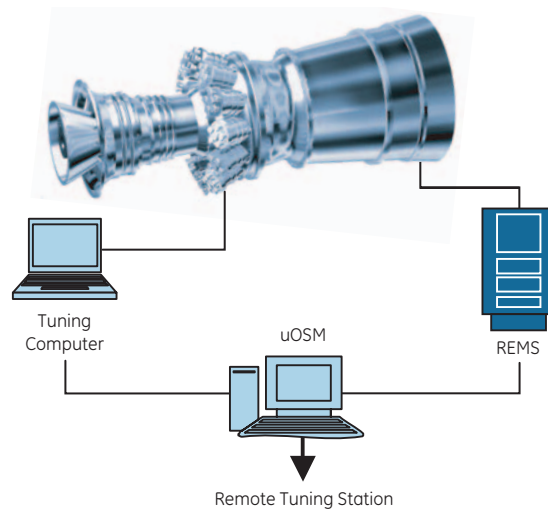
- Increased accuracy
  - Eliminates SCR and HRSG impact
  - Uses optimum probe placement
- More Representative Data
- Integrated RDLNT and Emissions Data
- Faster Service for Emissions Tuning
- Consistent Measurements

## Performance Features

- Improved efficiency and reduced emissions
- Probe placement for optimum bulk measurement
- Ability to respond quickly to changes in turbine operation or ambient conditions
- Fixed, repeatable system ensuring validity and consistency

## Site Requirements

- Installed remote DLN tuning and hardware
- Suitable platform and space for REMS cabinet near GT turbine duct
- Calibration gases for start-up and ongoing use
- Access to:
  - Instrument air
  - 480 VAC electric power supply
  - Drain/sewer system for condensate run off



For more information, contact your GE Energy representative or visit us at [gepower.com/airquality](http://gepower.com/airquality).