

Smallworld Design Manager* 4.1.2

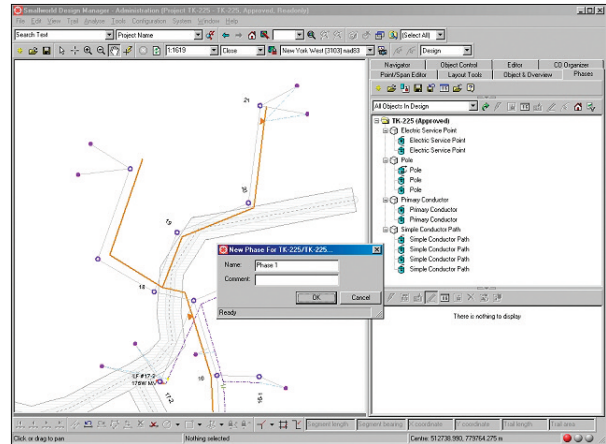
Smallworld Design Manager* 4.1.2 is the latest release in GE Energy's Engineering Management product portfolio. It is a comprehensive workflow management system for network planning and design, including:

- Easy-to-use design layout tools with CAD-based precision placement features
- Workflow support and process control
- Robust analysis of alternative design scenarios
- Incremental processing of large designs
- Work point/span modeling
- Cost estimation and reporting tools
- Work package preparation tools

Design Manager allows companies to implement an enterprise-wide design paradigm that accurately captures intricate business rules while hiding many of those complexities from the user. As a result, the overall design process can be streamlined, making it easier for users to "design to standards" and "build to design."

Built on GE Energy's Smallworld Core Spatial Technology*, Design Manager operates directly on network data in the corporate geospatial repository, unlike many design tools that require complicated extracts and copies of data that may become outdated during the design process. The full integration of design and as-built data in a single database allows planners and designers to work and collaborate on the most up-to-date version of the network. Real time access to the current network data reduces the cost of designs and lessens the risk of costly mistakes.

Furthermore, by interacting directly with network data, operational systems that rely on timely network updates can be satisfied with Design Manager. For example, Design Manager is configured to integrate with outage management systems such as Smallworld



PowerOn*, allowing approved designs to be sent to OMS as work orders for dispatchers to bring designs on line as soon as they are constructed.

As an enterprise solution, Design Manager can be deployed throughout the organization for electricity, gas, water, wastewater, and telecommunications networks. For large companies that operate more than one network, the ability to share a common set of data and design tools eliminates the inefficiencies and redundancies associated with requiring multiple departments having to learn and maintain different engineering applications.

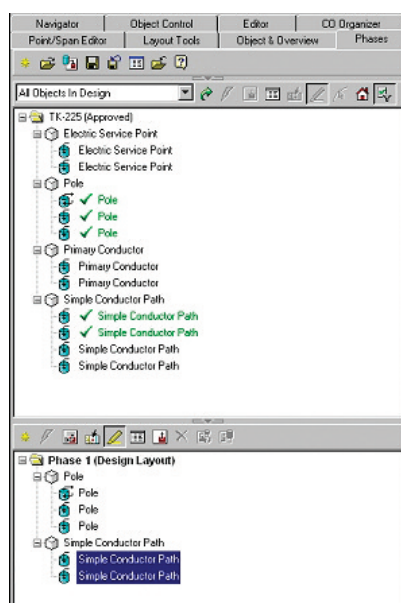
What's New in Design Manager 4.1.2

Design Manager* 4.1.2 builds on previous releases of the product and delivers enhancements around phased completion (previously known as Dynamic Phase Completion): Smallworld Design Manager 4.1.2 supports phased completion as an end-to-end workflow from a new user interface element, the Phases tab. This enables the following functions:

- Opening a design or phase
- Creating/activating a design
- Creating/activating a phase
- Listing objects in the current design
- Assigning objects to a phase



- Removing objects from a phase
- Deleting a phase
- Changing the state of a design or phase
- Performing a test integration for a phase. This uses another new user interface element, the Test Integration Results window.
- Integrating a phase
- Integrating the design after all phases are posted



Benefits

Design Manager provides a range of benefits to the organization, including:

- Automated design layout tools (DLT), including CAD-based precision placement tools that reduce labor costs by shortening the time required to lay out designs while improving design accuracy.
- Enforcement of the workflow process is a key benefit of implementing Design Manager, particularly in a large organization where many designers with varying skill sets are planning networks in the system.
- Robust cost estimation tools, including the MU/CU enhancements at this release, allow designers to accurately check costs at anytime during the design workflow without having to leave the system. This accelerates the design process and makes the ultimate cost assessment process more accurate, since errors are detected early during the layout process.
- Integration with outage management systems, such as Smallworld PowerOn, provide more timely delivery of approved designs to the operational network, allowing dispatchers to switch in facilities as they are constructed.

Licensing

Smallworld Design Manager 4.1.2 is licensed per single user or as part of an enterprise license agreement and can be delivered in the following configurations:

- Design Manager 4.1.2 client, including Smallworld Design Layout Tools*
- Design Manager 4.1.2 client and Smallworld CST* 4.1.1 Commit License
- Design Manager 4.1.2 client, Smallworld CST 4.1.1 Commit License, and Smallworld A&O* 4.1

Design Manager 4.1.2 is also sold as an optional, pre-configured module for the Smallworld Utility Office Suites, including Smallworld Gas Distribution Office and Smallworld Electric Office.

For more information, contact us at energy.tdsolutions@ge.com.

* Trademarks of General Electric Company.
Windows is a registered trademark of Microsoft Corporation in the United States and other countries.
©2009 General Electric Company. All rights reserved.

GEA-15078A (02/09)

